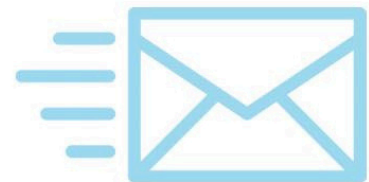


DROP-IN BUS PRE-REGISTRATION

FRIDAY, AUGUST 2ND AT 8:00 AM

REGISTRATION INFORMATION:

- ALL returning Drop-In Bus Takers & Fun Clubbers going into 5th Grade are eligible for **Pre-Registration**
- The price for the 2024-2025 School Year is **\$400** for the first child in a household and **\$375** for any additional children in the same household
- Registration forms must be sent to **dropinrege@billericabgc.com**
- Any forms sent prior to Friday, August 2nd at 8:00 AM **will not be considered**



PLEASE CONTACT OUR TEEN DIRECTOR,
VANESSA, WITH ANY QUESTIONS/CONCERNS
AT VANESSA@BILLERICABGC.COM





BOYS & GIRLS CLUB
OF GREATER BILLERICA

DROP-IN BUS OPEN REGISTRATION

MONDAY, AUGUST 5TH AT 8:00 AM

Transportation to our Drop-In Program is available for the 2024-2025 School Year but **spaces are limited**. This bus will provide transportation from both the Locke and Marshall middle schools.

The price is \$400 for the first child (Sept. - June) and \$375 for any additional children.

Registration forms can be sent Friday to dropinreg@billericabgc.com.

Any forms sent prior to Monday, August 5th @ 8:00 AM will not be considered.



DROP-IN FAQ

How do I register for the Drop-In Program?

To attend the Drop-In Program, the only requirement is an active membership (\$50/year). If your child requires transportation from the school, the fee is \$400 for the year. If you have other means of transportation, the membership is all you need.

What are the hours of the Drop-In Program?

The Drop-In Program is open Monday-Friday from 2:00 - 6:00 PM. Evening programming is available until 7:30 PM if a member chooses to participate.

When does Drop-In start and end?

The Drop-In program routinely opens the second week of school. We encourage parents to make other arrangements until our program begins. Also, we close before the end of the school year (early to mid-June) to start preparations and building maintenance for our summer camp.

How does the Drop-In Program work?

Members can "drop-in" on any program day and there is no need to let us know when your child will or won't be attending. We appreciate a heads up if your child attends regularly but prior notice is not required.

Are members really allowed to leave without a parent/guardian present?

Yes. The Drop-In program has an open door policy - meaning that members do not require an adult to dismiss them and they are able to exit the building independently. Once they exit, they are not allowed to re-enter unless a parent/guardian is present. We do keep them busy so it is rare that a member would try to leave early without permission. Parents/guardians should discuss this policy with their child prior to attending the program.

How do I sign-up for the Drop-In bus?

Pre-registration information will be sent out to families currently enrolled in our Drop-In and childcare programs. Open registration information will be posted on our Facebook and on our website. Bus registrations will only be accepted by email.

